

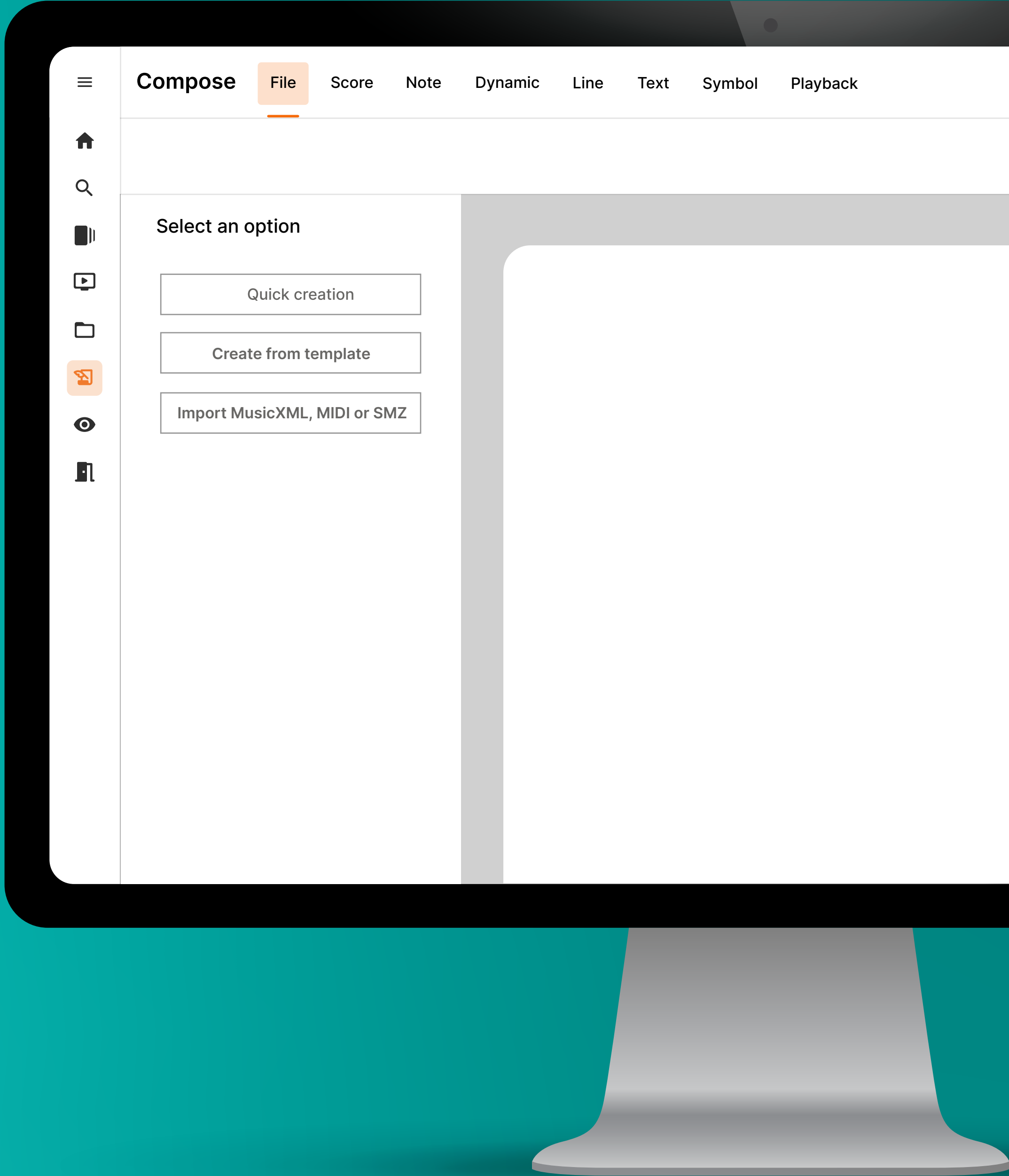
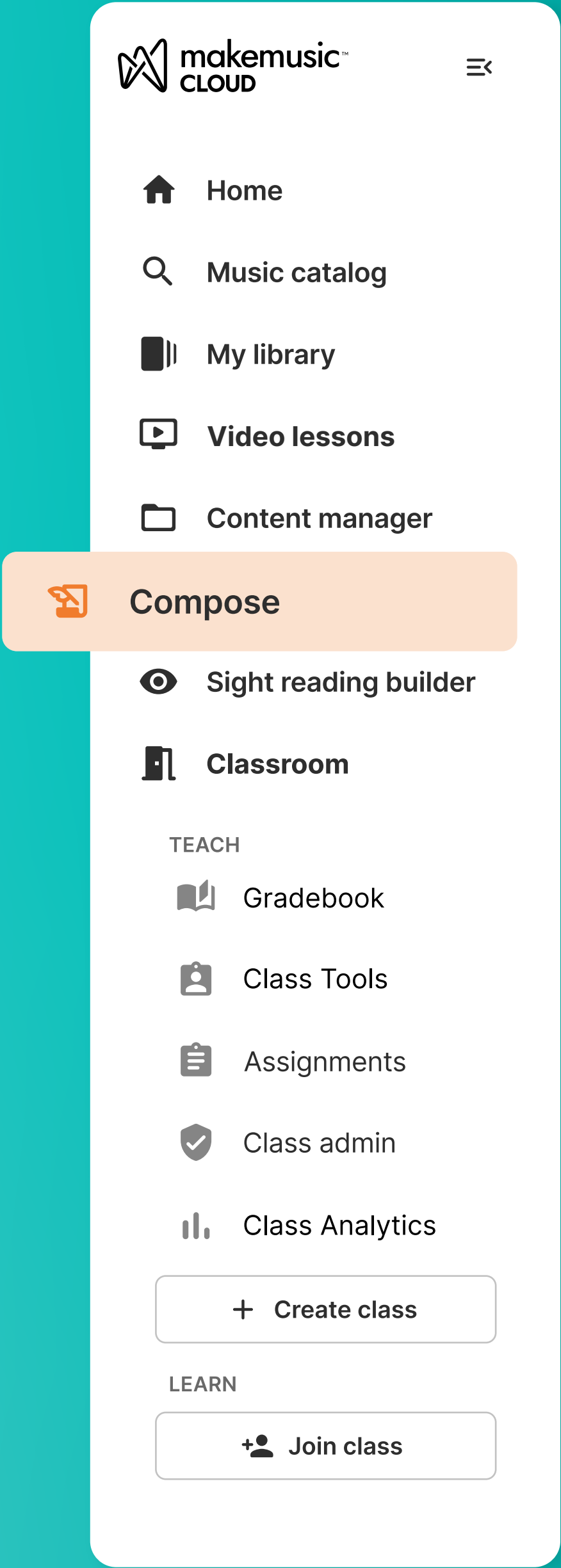
Explore the Compose tool

This beginner guide will help you get started!

Open **Compose** from the main menu in MakeMusic Cloud

Select **Quick Creation**
(you can always add or change your instruments later!)

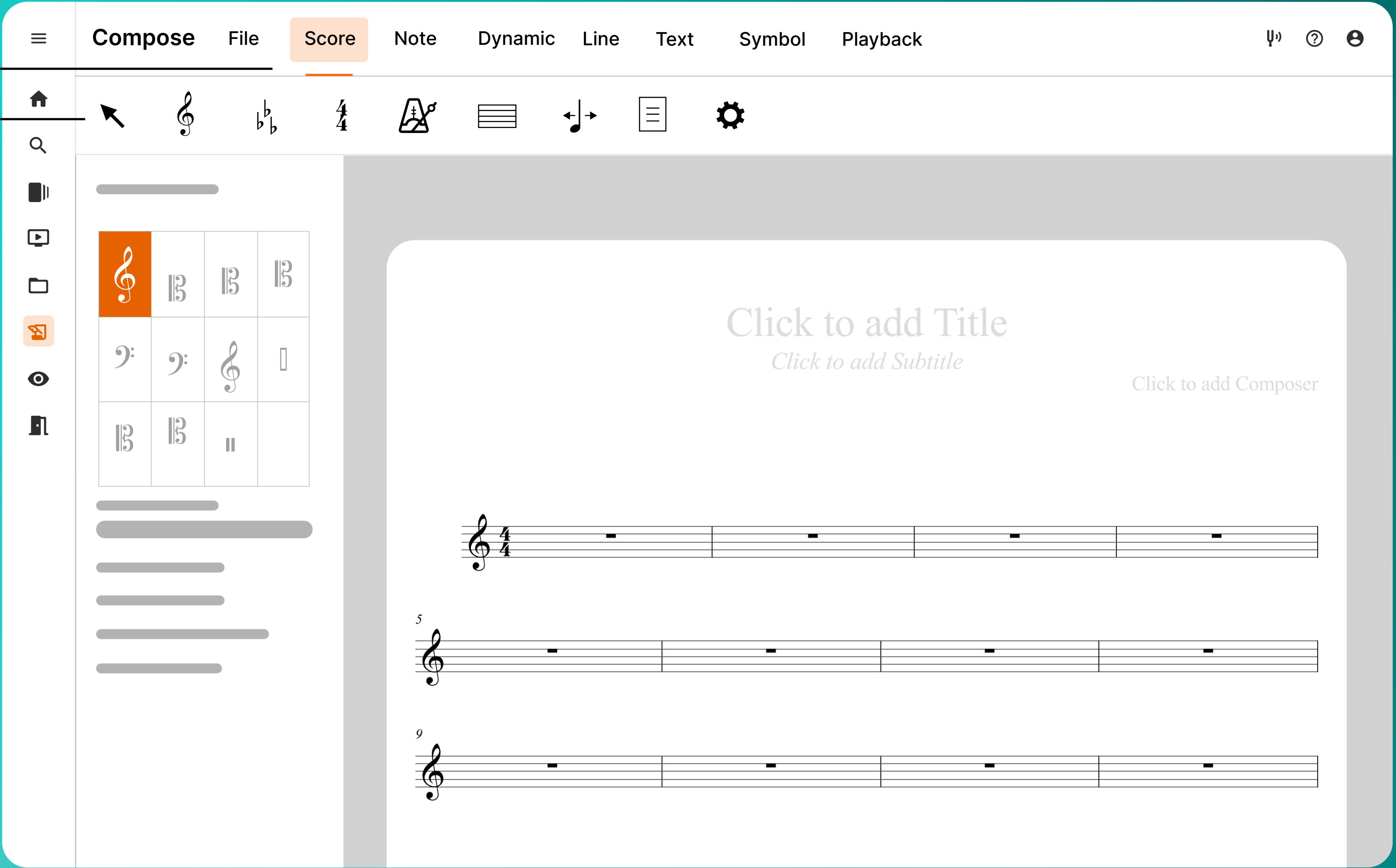
Quick creation



Notation entry basics:

The top menu helps navigate Compose's categories of tools and options

Select a tool from this row and the left panel will show its options

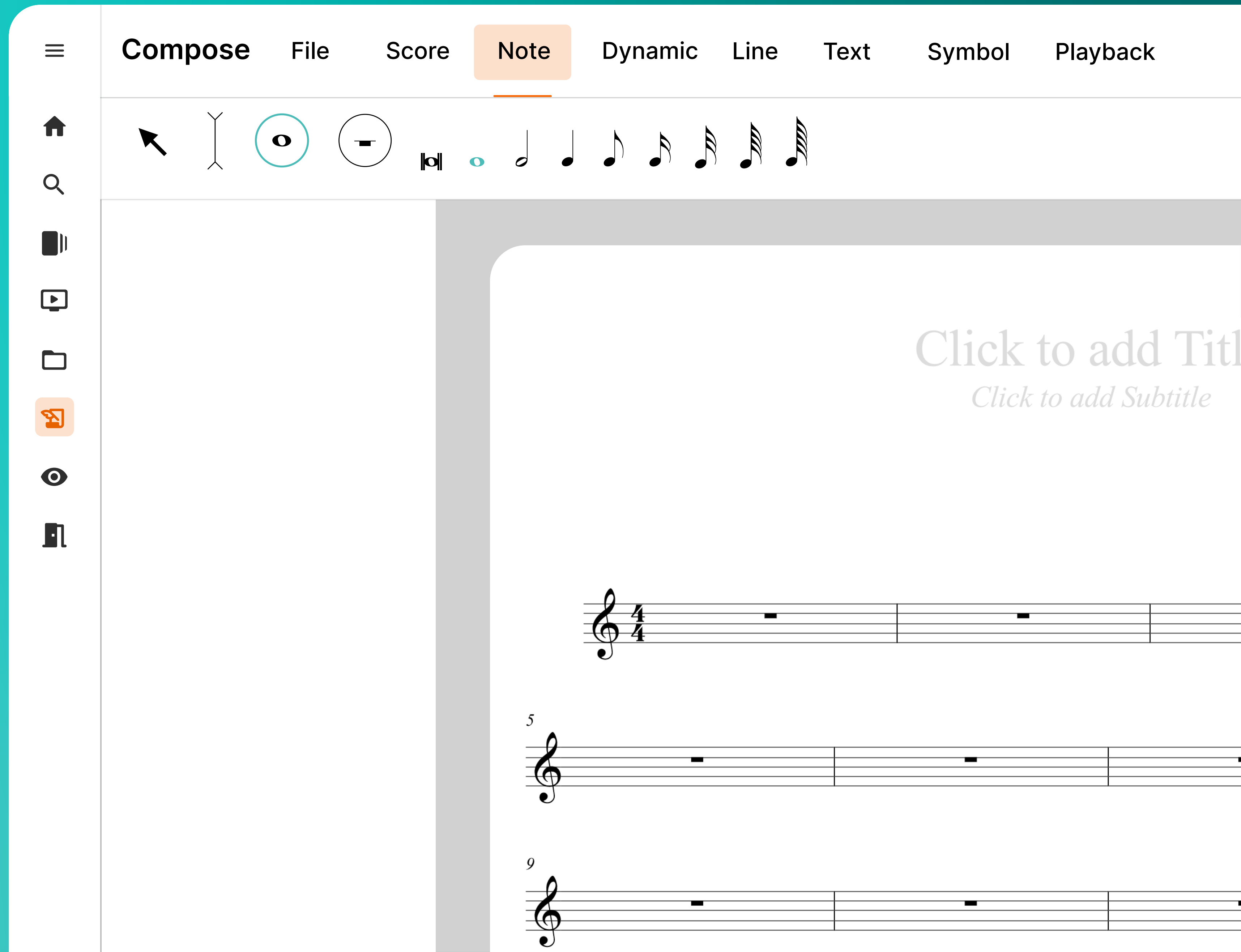


Let's add some notes and rests:

Using the **Note** menu,
select either the
Activate notes option
or the **Entry cursor** tool



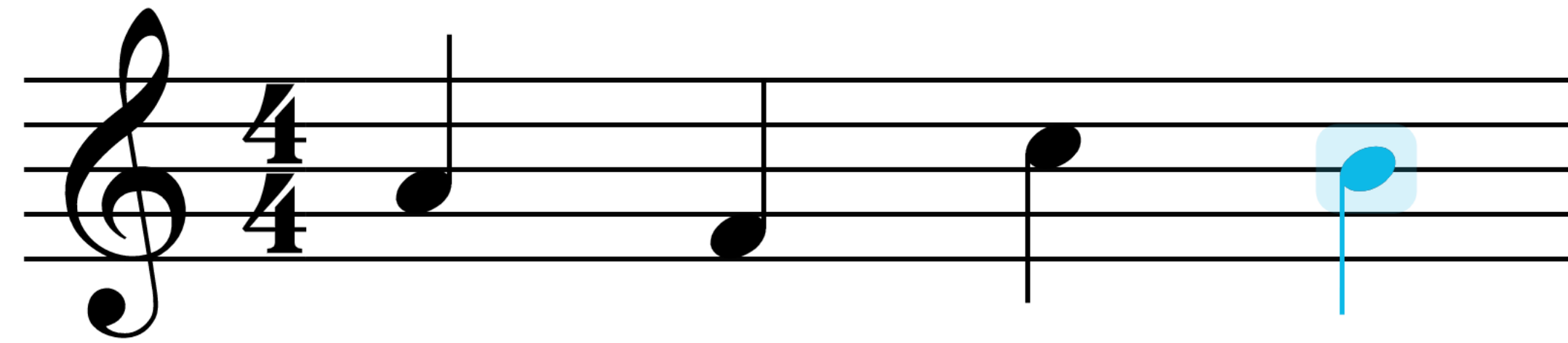
Then select a note value




With **Activate notes**, add notes with your mouse by clicking on the staff

With the **Entry cursor**, add notes with keyboard arrows or a MIDI keyboard

You can adjust your notes by clicking and dragging them up or down to make them higher or lower on the staff



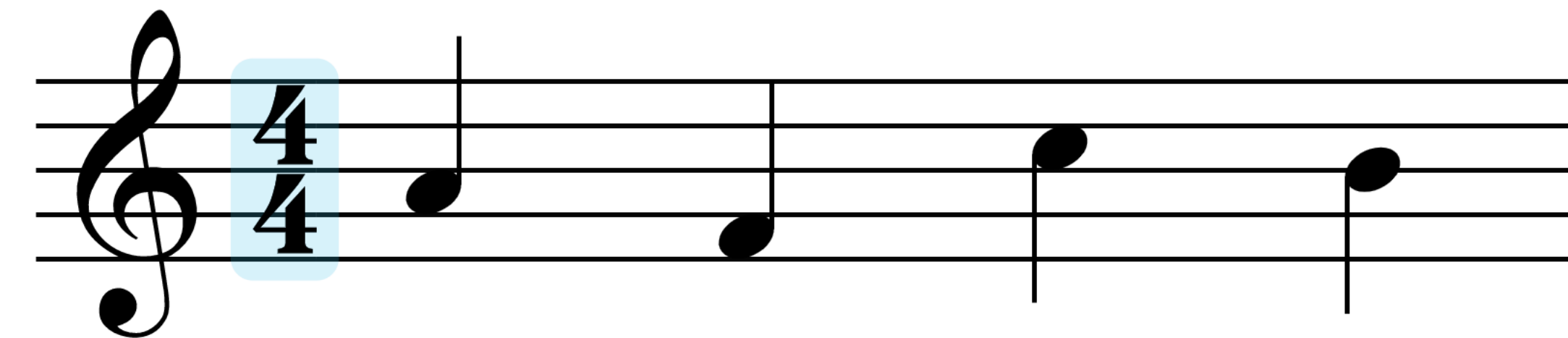
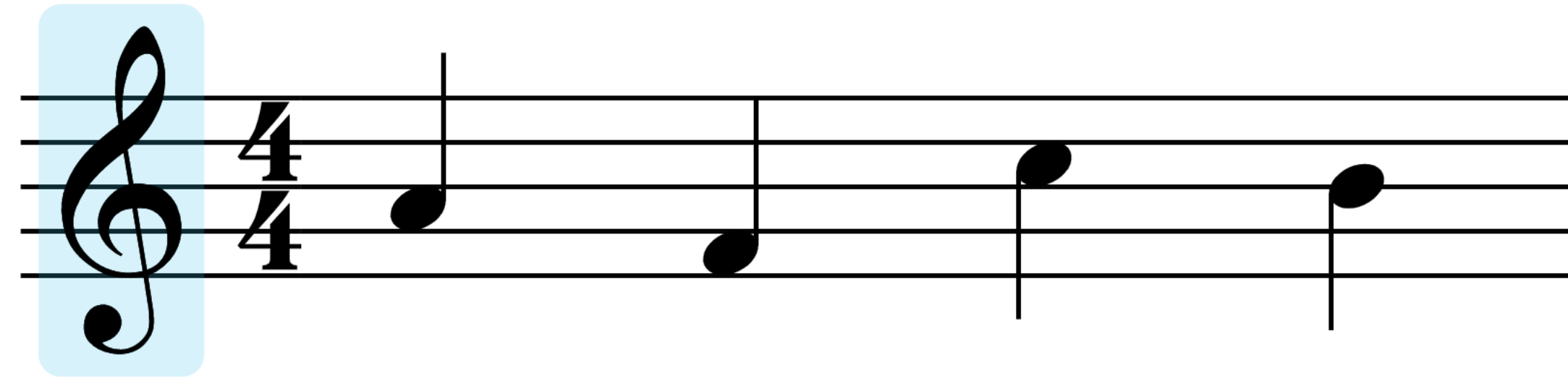
[illegible]

Use the **Selection** tool to adjust other elements of your score

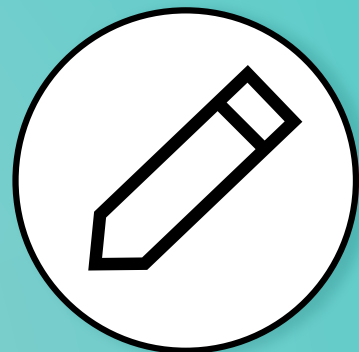
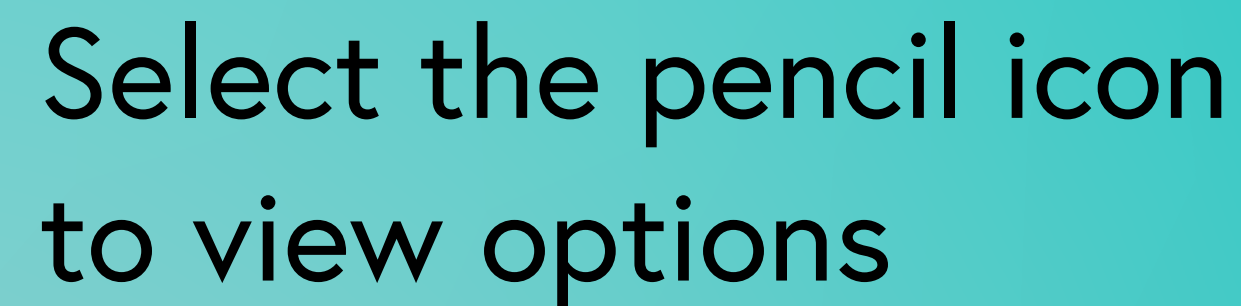


Select the time signature or the clef in your composition to edit

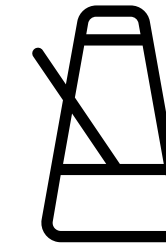
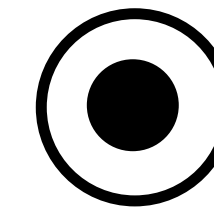
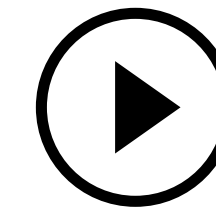
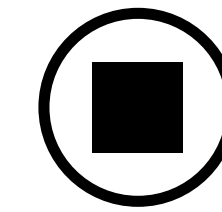
View options for your selected element on the left panel.



Select **Score** and then the **Staves** and **measures** tool


[illegible]

To hear your composition, use the playback controls at the top right



Use the **File** menu to share and save your composition in a variety of ways!

- Save to your MakeMusic Cloud account
- Save to Music XML
- Save to PDF
- Assign (teachers)
- Open in Practice

To learn more or find an answer to a specific question, check out the **Compose Quick User Guide** by following this link or by selecting  in Compose.



Happy composing!